

Keyless Entry Remote - Battery Replacement

Classification: EL95-003

Reference: ITB95-051

Date: September 20, 1995

KEYLESS ENTRY REMOTE SWITCH ASSEMBLY: BATTERY REPLACEMENT AND RE-PROGRAMMING PROCEDURE

APPLIED VEHICLE:

G20 (P10)
I30 (CA32)
J30 (JY32)
Q45 (G50)

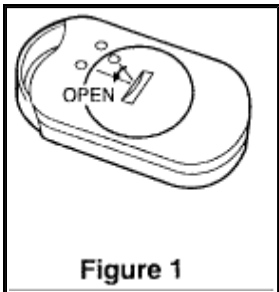
SERVICE INFORMATION

If an Infiniti remote switch assembly (remote controller) fails to operate, or operates intermittently, use the following procedures to bring it back into proper operation.

NOTE : These procedures are for all applied vehicles except where noted.

SERVICE PROCEDURE

Remote Controller Battery Check and Replacement

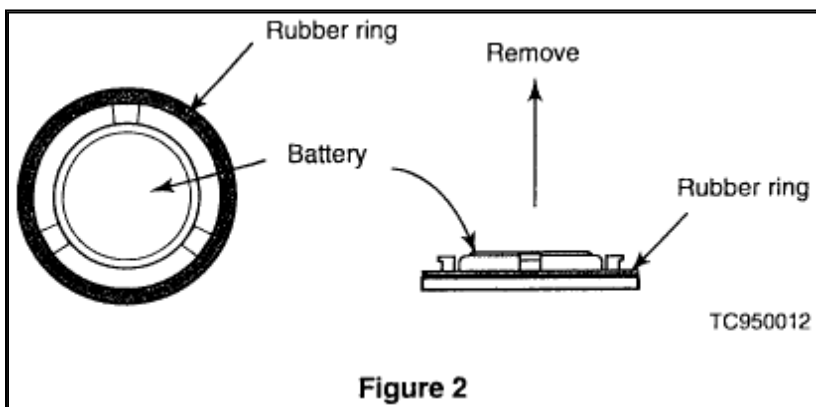


ZOOM

SIZED FOR PRINT

1. Remove the remote controller battery lid with a suitable tool, a quarter works best (Figure 1).

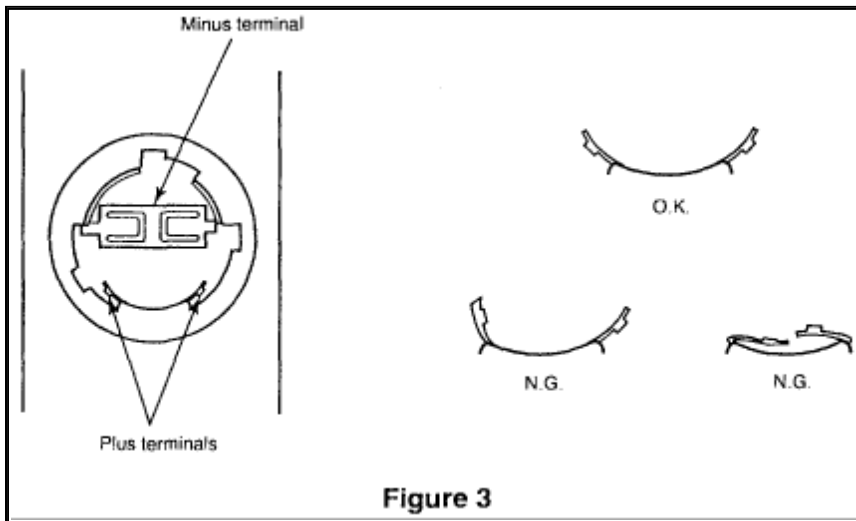
CAUTION : Do not use a screwdriver or a knife. These tools may damage the cover.



ZOOM

SIZED FOR PRINT

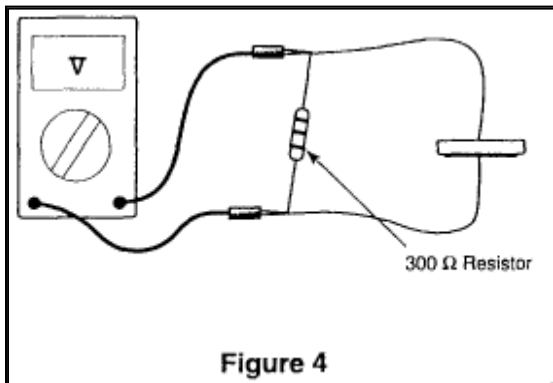
2. Remove the remote controller battery(s) from the lid (Figure 2).



ZOOM

SIZED FOR PRINT

3. Check the remote controller terminals. Clean and repair as necessary (Figure 3).

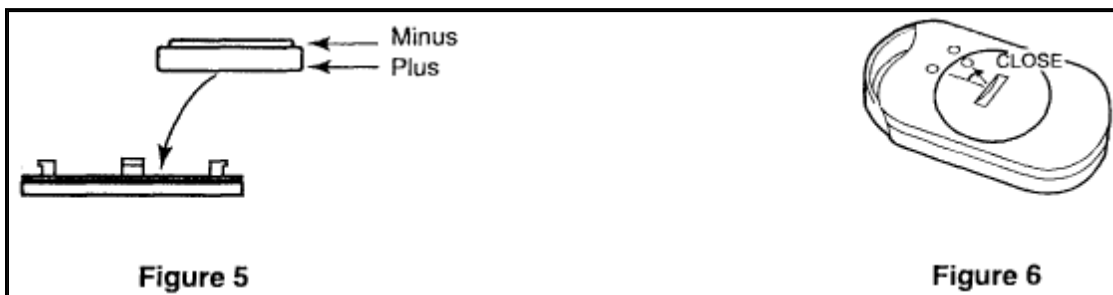


ZOOM

SIZED FOR PRINT

4. Use a high impedance volt-ohmmeter and a 300 ohm resistor in parallel to check the voltage of the remote controller battery. (Figure 4) If 2.5 volts or greater, the battery is O.K. If less than 2.5 volts, replace the battery. (300 ohm resistors are available from local electronics suppliers, e.g. Radio Shack.)

NOTE : If you do not have a 300 ohm resistor, install a new battery and test controller operation.



ZOOM

SIZED FOR PRINT

6. Install the battery onto the lid properly (Figure 5).
7. Install the lid with the battery and rubber ring onto the controller. Turn the lid to the close position. (Figure 6)

NOTES :

1. Make sure the lid cover mark and the controller mark are aligned properly (Figure 6). If not, the plus terminals in the controller may be deformed. The battery will discharge quickly if the plus and minus terminals are shorted.
2. Do not deform the rubber ring.
8. Press the buttons several times near the vehicle to check their operation.

Battery Type	Part Number
Aftermarket 3VDC Battery (e.g., Sanyo, Eveready, Radio Shack)	CR2025

ZOOM

SIZED FOR PRINT

Remote Controller Battery Part Number

NOTE : Under normal circumstances, it is not necessary to "re-program" the remote controller when a battery is replaced.

Remote Controller "Re-Programming" Procedure

This procedure is used when adding an extra remote controller to the vehicle; when or when replacing the remote controller. The procedure may also be used to "re-program" a remote controller that fails to function properly after battery replacement.

If "re-programming" a remote controller that fails to function properly after battery replacement, restore the remote controller "reset" function as follows:

- ^ Remove the remote controller battery.
- ^ Press the door lock button on the remote controller one time.
- ^ Re-install the remote controller battery.

To Program or "Re-Program" the Remote Controller

NOTE : If the customer has more than one remote controller, all remote controllers must be reprogrammed at the same time.

I30 only: Make sure the extended storage fuse (# 40) is installed.

1. G20, J30, 045 only: Open the vehicle trunk.
2. All models, including I30: From inside the vehicle, close and lock all vehicle doors.
3. Insert and remove the ignition key more than six times within 10 seconds. This will erase any original ID codes from the control unit in the trunk. (The hazard warning lamps should flash twice in the I30 model only).
4. Enter new vehicle code as follows:

G20, J30, Q45 Models

- ^ Unlock and lock the driver's door inside lock lever one time.
- ^ Press the door lock button on the remote controller one time. This will enter the vehicle ID code into the remote controller.

I30 Model

^ Turn the ignition key to the "ACC" position.

^ Press the door lock button on the remote controller one time. (The hazard warning lamps will flash twice again.) This enters the vehicle ID code into the remote controller.

To Program Additional Remote Controllers

(continued from previous instructions, steps 1-4)

5. Manually unlock the driver's door, then lock again with the door lock knob.
6. Press the door lock button on the additional remote controller once.
7. Turn the ignition key to the "OFF" position (I30) and remove the key to test remove operation.
8. Complete ID enter mode by operating the driver's side door.

A maximum of four remote controllers can be programmed to the vehicle. Any attempt to enter more will be ignored.

In all cases, test the remote controllers for correct operation with the ignition key "OFF" and removed.

NOTE : The "beep" function in some Infiniti keyless remote controllers was deleted during the period 3/94 to 5/94, depending upon the model. After 6/1/94 production, no Infiniti remote controllers have a "beep". If a customer requests a remote that "beeps" when the buttons are pressed, the replacement remote controller should not be charged to Warranty.

CLAIMS INFORMATION

Remote controller replacement due to customer abuse, purse/pocket damage and/or loss is not covered by Warranty. The replacement of the remote controller battery is also not covered by Warranty. These are "customer pay" situations.